

DRY FEEDING SYSTEMS

Feed dispensers



7l single dispenser 7l double dispenser 6l and 10l slant dispenser

Feed dispensers are designed for individual feeding of sows and they are available in 3 models. Designed for pipe with 45 or 60 mm diameters with the possibility of using an adapter on 45 mm in diameter. With transparent acrylic or PVC housing.

ADVANTAGES:

- precise adjustment of feed dose,
- uniform filling of the container,
- each dispenser may be closed using a single hatch.

Fibreglass feed silos

The fibreglass feed silos with steel hot galvanised bearing structure are designed for storage of feed mixes, grain and other materials. New type of SIA-GL silo offers horizontal connection. The top part is white and lower part is gray, rough on the outside and smooth on the inside (with gel coat finish). The silos are fitted with a ladder as standard. At the customer's request the silos may be optionally equipped with a connection for feed truck or mechanically opened top hatch.



glass laminate silo,
available volumes: 3.6; 4.8; 6; 7.2; 9; 10.8; 12; 13.2; 15 and 18.6m³

ADVANTAGES:

- fibreglass ensures long silos life,
- excellent insulating parameters prevent water vapour from condensing on the walls, the feed mix does not stick to the container walls which eliminates problems associated with the necessity of frequent cleaning and limits the risk of mould formation,

Metal feed silos

A feed silo is designed for storage of feed mix and bran. The silo is made of high quality galvanised steel. Filling of the silo is done by a supply pipe with a quick coupling. A manually opened hatch is fitted as standard to enable using alternative methods of loading. The stored feed may be discharged using a method of choice, i.e. spiral, chain or screw conveyor.

ADVANTAGES:

- the thickness of metal plate and sturdy design ensure high strength and durability of silos,
- the silo's legs are made of galvanised steel and ensure high corrosion strength,
- convenient hopper outlet angle and the outlet's diameter of 440 mm enable free flow of feed to the conveying system,
- side charging of hopper is available as an option to enable independent supply of feed from the container.



galvanised steel silo,
available sizes: 3; 5.15; 8; 12.9; 17.5; 22 and 26.5m³

Cage livestock scale

An electronic livestock scale is designed for quick and precise weighing of livestock on farms. Standard dimensions of scales: width 50 cm, length 150 cm, weighing range up to 500 kg. On request we manufacture scales with custom dimensions and larger weighing range as well as scales with vertical bars and scales platforms without cages. Each device is equipped with LED display and internal battery.

ADVANTAGES:

- metal, hot galvanised structure ensures scales life,
- special holders and rubber wheels facilitate transport of scales,
- with anti-slip floor,

Chain feed distribution system

Chain system is designed for feeding all process groups of animals. It contains a chain conveyor for transporting feed which is made up of plastic disks on a chain enclosed with a pipe. The chain is sturdy and easy to join. The conveyor transports the feed at constant speed and ensures high efficiency of feeding system.

ADVANTAGES:

- the system's elements are flexible which enables the user to install the feeding system in any configuration in every livestock building,
- the system may be installed directly under a silo or be fed from spiral feeding system.



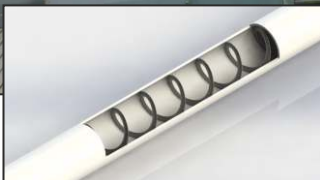
farrowing sector equipped with chain feed distribution system

Spiral feed distribution system

The spiral system is used mainly in buildings where feeders are installed in a straight line and the feed line is max 70 m long. The feed is supplied through a spiral placed inside a PVC pipe. The spiral is made of high quality steel, it is very flexible but keeps maximum strength. The PVC pipe may be straight or bent at max 30°.

ADVANTAGES:

- a number of release points may be connected to a PVC pipe,
- due to special design of the drain pipe close-off, a specific release point in an empty pen may be cut off,
- the length of a feeding system may be extended and the direction of feeding may be reversed using overflow bins.



a fattening house equipped with spiral feed distribution system

FND Electric feed dispensers

FND Electric feed dispensers allow individual dosing of food to an animal. Nutrition data is archived, thanks to which the breeder has full control over the condition of the sow. The system can be managed in a pig house, in an office or remotely from anywhere in the world thanks to the access to the Internet. The management is supported by our proprietary Fetura Cloud system as well as an application for smartphone and tablet.

The system monitors and analyzes data on the food consumed by creating numerous reports depicting the state of your sow. Dispensers can also be used to feed boars.

There are two types of dispensers:

- electric cable dispenser - FND

- electric wireless dispenser with RFID communication



electric cable dispenser - FND

electric dispenser with RFID communication



electric feed dispensers in the mating sector

Rzad 1								
3201	3202	3203	3204	3205	3206	3207	3208	3209
158	70	150	215	153	179	196	201	178
141	141	140	140	142	141	141	140	138
2,6/6,5kg	2,6/6,5kg	3,5/5,9kg	3,5/5,9kg	4,1/6,7kg	1,2/6,1kg	3,7/6,1kg	2,4/5,9kg	3,6/4,5kg
■■■■■	■■■■■	■■■■■	■■■■■	■■■■■	■■■■■	■■■■■	■■■■■	■■■■■
Rzad 2								
3210	3211	3212	3213	3214	3215	3216	3217	3218
152	246	165	171	111	214	181	226	207
138	137	139	138	139	138	136	138	138
3,8/4,8kg	3,4/4,2kg	3,4/5,6kg	3,8/4,8kg	4,1/5,0kg	2,9/4,8kg	2,9/3,6kg	4,0/5,0kg	3,0/5,0kg
■■■■■	■■■■■	■■■■■	■■■■■	■■■■■	■■■■■	■■■■■	■■■■■	■■■■■

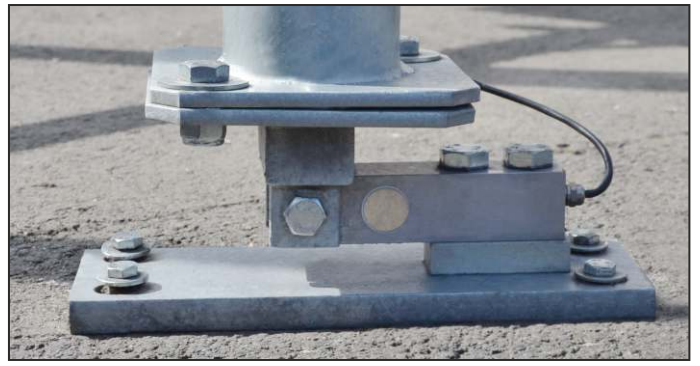
nutrition card and the condition of a given sow
a view from the mobile application of the Fetura Cloud system

ADVANTAGES:

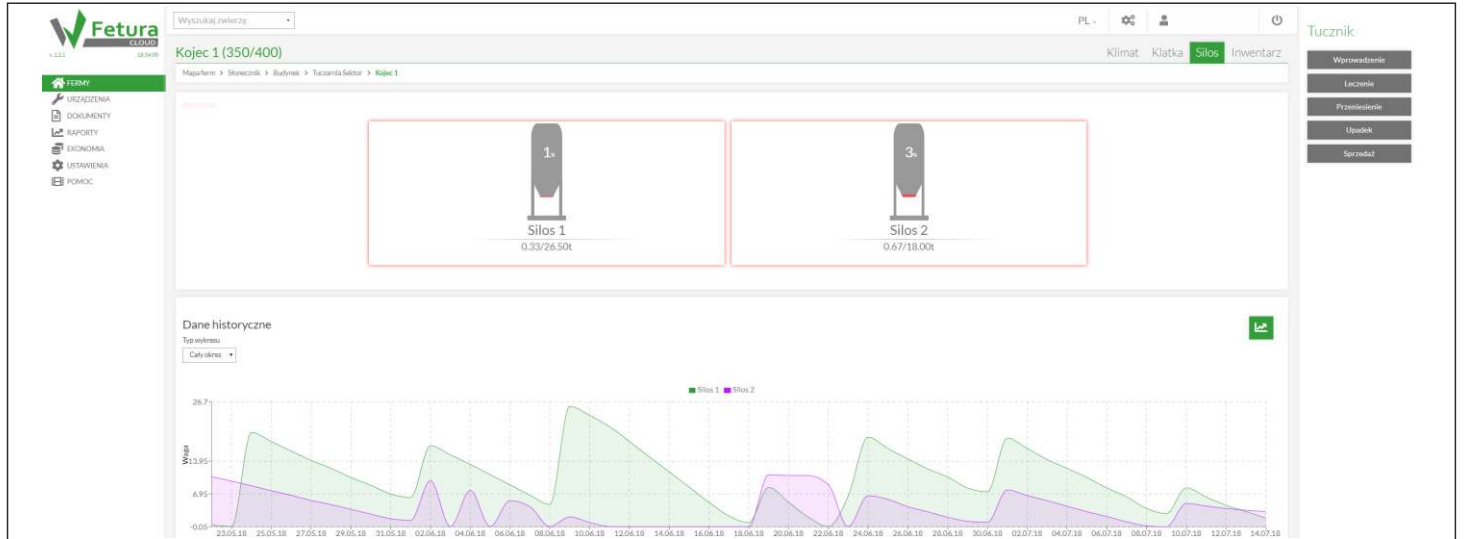
- data set and statistics of daily feed consumption,
- reduction of labour,
- repeated feeding of the feed to the trough during the day it allows feed the sow properly,
- control of the saw condition

Feed weighing systems in silos

The feed weighing system in a silo is intended for observing changes in feed quantity. The system includes a control panel and appropriate number of silo scales. Up to 5 scales may be connected to a panel, each with 3, 4 or 6 sensors. The Fetura Cloud system enables reading data and archiving results from different periods. This allows managing the amount of feed in silos, control feed consumption by sector and increase economic profits.



scales panel and silo scales



view of the current feed consumption in the fattening house - Fetura Cloud system



view of the history of feed consumption on the farm at a given time - the Fetura Cloud system

ADVANTAGES:

- the system is expendable, which means that the system with one panel and one scale can be extended with additional weights,
- current information on the amount of feed in silos,
- easy weight scaling makes the system easy to use and user friendly,
- creating statistics,
- monitoring the flow of feed in silos.



Augustowo 6, 86-022 Dobrcz, **POLAND**
tel. +48 52 364 96 07,
e-mail: info@wesstron.pl
WWW.WESSTRON.PL