



**FARROWING SECTOR**

The quantity and quality of piglets passed on from the farrowing sector to further rearing determines the efficiency and profitability of pig breeding. Any modern and well-organised farm relies on setting out an adequate number of rooms, i.e. farrowing sector, and furnishing them with a suitable number of pens. The design of pens and the farrowing furnishings must ensure proper conditions of rearing and security of piglets. The core part of each farrowing pen is the farrowing crates. Our company offers straight and angle farrowing crates, and both types ensure proper conditions of rearing and production of piglets at minimum loss in animals.

### Straight farrowing crate

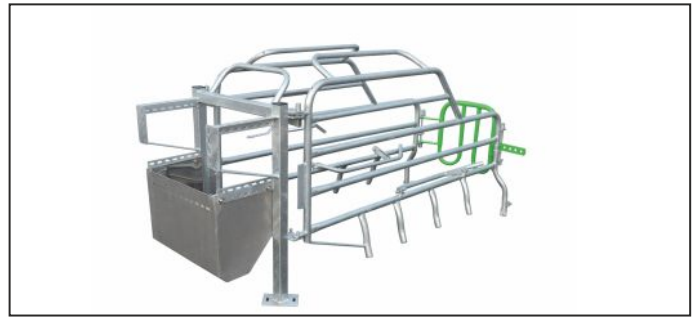
The straight farrowing crate is made of high-quality hot-dip galvanized steel. The system is fastened to the floor or slats with four legs. The crate front is set square to the partition wall or a PVC panel. The farrowing crate is installed with a high straight trough made of stainless steel. We offer two types of the product differing by the end of the crate sides: the swing pipe style and the fingered style.

#### ADVANTAGES:

- the fastening with four legs ensures stability of the crate,
- the guard bars protect the piglets from being crushed by the sow,
- the cage structure allows free adjustment of front and rear width and the length through the cage door,
- the high trough prevents spilling of feed by the sow,
- the crate sides are ended with fingers or a swing-lifted pipe.



the farrowing pen with the straight farrowing crate



straight farrowing crate with a high stainless steel trough, ST3 type side with finger style end (KB 12210)



SOLID type straight farrowing crate with a high stainless steel trough, ST4 type side and the swing pipe end with ST6 front, adapted to suevia drinking trough and aqualevel water regulator

### Angle farrowing crate

It is attached to the ground with 2 feet. It is fixed to the wall at an angle, using special plates. It is mounted with a polyethylene corner trough. The angle farrowing crate is smaller than the straight version; hence it is good for small areas.

#### ADVANTAGES:

- the angle setup ensures maximum usage of the pen space,
- the guard bars protect the piglets from being crushed by the sow,
- the adjustable length and width allows adapting the crate to the sow size,
- the PE trough with stainless steel hardware is protected against gnawing.



the angle farrowing crate with a PE trough



## PE corner trough

The corner trough is made of polyethylene with stainless steel hardware and designed for the angle farrowing crate. The trough is installed on the crate left or right corner. Trough capacity: 12 L.

### ADVANTAGES:

- resists the aggressive environment of the sty,
- the stainless steel hardware protects the trough edges from gnawing,
- resists stress and strain.

## High straight trough

The high straight trough is made of stainless steel and designed for the straight farrowing crate. Trough capacity: 15 L.

### ADVANTAGES:

- resists the aggressive environment of the sty,
- the stainless steel hardware protects the trough edges from gnawing,
- resists stress and strain.



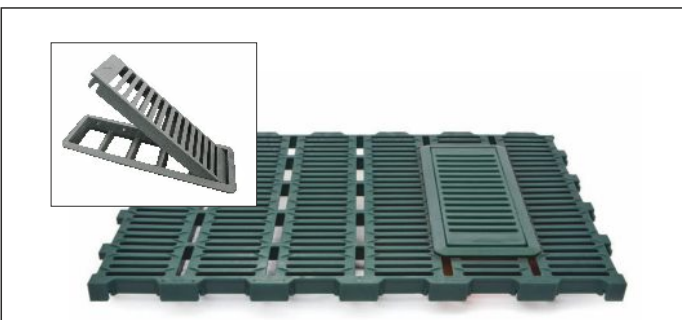
·Straight trough in the farrowing sector with the Gestal Solo feeding system

## Damper for waste removing

The damper is made of plastic. It is integrated with all grate plastic floor systems. Dimensions of the damper: 35.5 x 10.5 cm.

### ADVANTAGES:

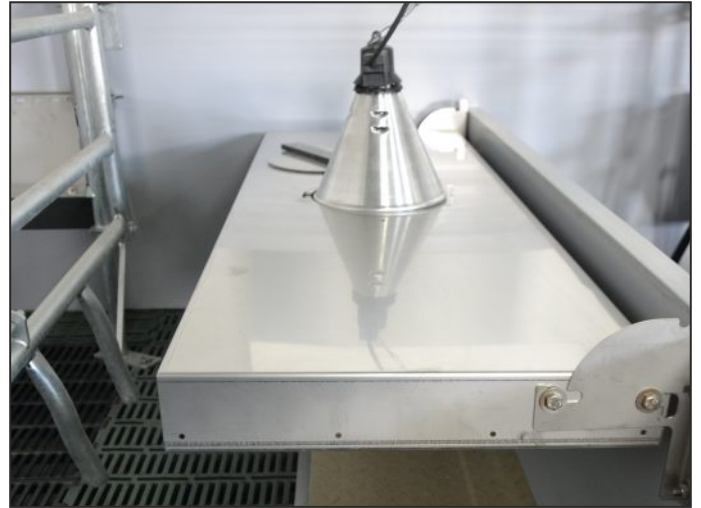
- the possibility of removing sow droppings when there are no piglets yet makes the delivery room clean,
- easy system of the damper closing and opening



damper for waste removing

## Piglet shelters

The piglet shelters are used in farrowing crates and rearing rooms. They perfectly complement the sty heating system by assuring its higher efficiency, improving energy consumption, and limiting the heat source effect on the entire room. The shelters can be used with floor heating panels or overhead radiators. We offer straight, corner and modular shelters. The shelters can be made of plastic, plywood or stainless steel.



stainless steel piglet shelter in a farrowing pen

### ADVANTAGES OF STAINLESS STEEL PIGLET SHELTERS:

- they have plastic sheet curtain that keeps the interior warm,
- the shelter sizes are adapted to the sizes of electrical or hydronic heating mats,
- each shelter features an opening for a radiator that is sealed when the heating device is removed.



shelter for piglets made of plastic in farrowing cage

### ADVANTAGES OF PLASTIC PIGLET SHELTERS:

- height adjustment of the plastic piglet shelter,
- a shelter made of a material resistant to high temperature,
- a shelter is light, so it does not burden the fencing,
- it is easy to keep clean, because it is possible to clean the shelter with a washcloth without creating damage and causing corrosion

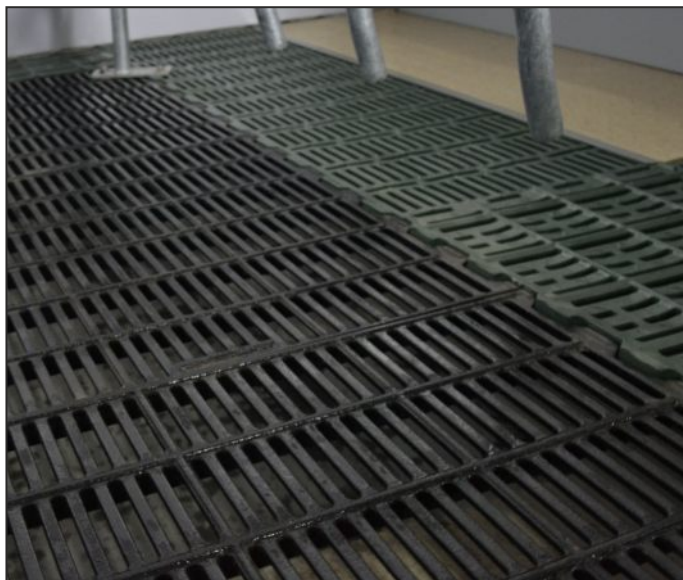
## Heating mats

Optimum heat supply is essential for pigs and sows in the farrowing pens. The heating mats are heating equipment which ensures that optimum temperatures are maintained for the piglets without overheating the sows. The heating mats can be integrated with the slats system or simply laid on the slats. We offer heating mats made of various materials and in a variety of sizes:

Name	Material	The power supply method	Way of laying
Type 1	polymer concrete	water installation	stacked on the binders
Type 2	polymer concrete	230V electrical supply	stacked on the binders
Type 3	plastic	230V electrical supply	arranged on a grid
Type 4	plastic	water installation	stacked on the binders

### ADVANTAGES:

- effective heat for piglets favour faster growth and lower disease incidence rate,
- the temperature is uniformly spread across the entire heated surface,
- durable and reliable,
- easy to clean.

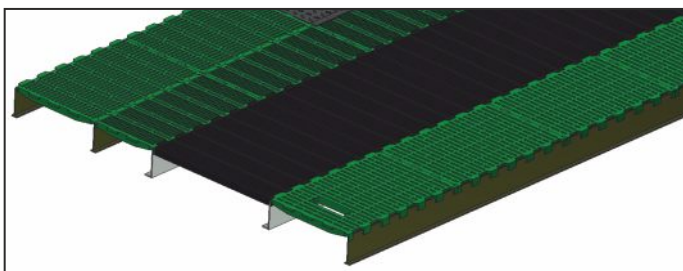


flooring in a farrowing pen based on plastic and cast iron slats

## Beams

The beams support the slats. The available beam types

- plastic beams reinforced with fiberglass, intended for farrowing areas, rearing rooms and weaners sector,
- galvanized metal beams with the width and length customised to individual breeder's demands.



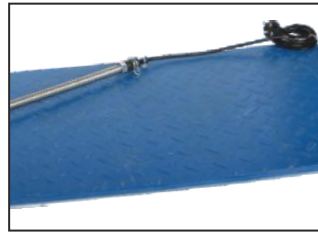
beams supporting plastic and cast iron slats



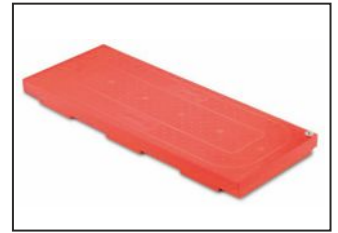
hydronic polymer concrete mat



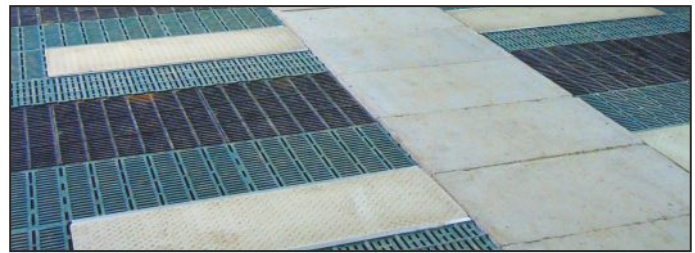
electric polymer concrete mat



electric plastic mat



hydronic plastic mat



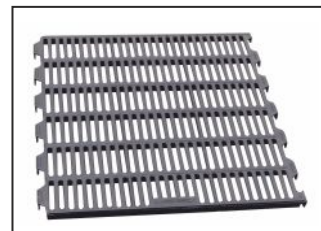
electric polymer concrete mat

## Flooring systems

The sty flooring type explicitly determines the system of animal management. The flooring system parameters must meet the relevant requirements of building (construction) laws and, at the same time, guarantee the comfort and safety at rest and in movement. The farrowing sector can feature various slats-based flooring configurations. The exact system configuration depends largely on the farrowing pen size, i.e. length and width.

The slats in our range include:

- plastic slats for sows,
- solid plastic slats for sows,
- plastic slats for weaners,
- cast iron slats,
- raised cast iron slats.



cast iron slats for sows



plastic slats for sows



Augustowo 6, 86-022 Dobrcz, **POLAND**

tel. +48 52 364 96 07

e-mail: [info@wesstron.pl](mailto:info@wesstron.pl)

**WWW.WESSTRON.PL**